

Marathon Monitors Inc.
Process Master 6.0
Getting Started Manual

COPYRIGHT © 1998
MARATHON
MONITORS INC.



Part # F200033

COPYRIGHT © 1998

MARATHON MONITORS INC.

3100 East Kemper Road, Cincinnati, Ohio 45241

1-800-322-4444 (513) 772-7788 FAX: (513) 772-7853

No part of this document may be stored or reproduced by any means whatsoever without prior written permission of Marathon Monitors Inc.

All trademarks used in this publication are duly marked and the sole property of their respective owners. No attempt at trademark or copyright infringement is intended or implied.

Marathon Monitors makes no warranties express or implied beyond the written warranty presented at initial purchase. Marathon Monitors Inc. is not responsible for any product, process, damage or injury incurred while using this equipment. Marathon Monitors makes no representations or warranties with respect to the contents hereof and specifically disclaims any warranties of merchantability or fitness for any particular application or purpose.

Revision 1.1

Add parts to minimum requirements for computer

Table of Contents

INTRODUCTION	2
MINIMUM CONFIGURATION REQUIREMENTS	3
INSTALLATION	4
WORKSTATION INSTALLATION NT AND 95.....	5
WINDOWS NT SERVER INSTALLATION.....	18
INSTALLING PM6 AS A SERVICE ON WINDOWS NT SERVER	30
TECHNICAL SUPPORT	32
MARATHON MONITORS' INTERNET ADDRESS.....	33
UNINSTALL PROCEDURES.....	34

Introduction

The following paragraphs provide introductory information regarding Process Master 6.0 (PM6). PM6 was developed by Marathon Monitors, Inc., to work with instruments made by Marathon Monitors, Inc.

Scope

The Process Master 6.0 software is made up of nine major applications and multiple users. The Process Master 6.0 software is used to manage day-to-day activities, generate reports on historical data, and provide real time information regarding Marathon Monitors, Inc. instrumentation.

Platforms

The Process Master 6.0 software will reside on a Windows NT or Windows 95 server. This machine will be referred to as the Process Master Server. Windows NT or 95 workstations connected to the Process Master Server will display information and execute software from the PM6 Server.

Process Master 6.0 Users

The following is a typical list of PM6 operators and applications:

Operators

*System Administrator
(usually one person)*

Supervisors

Furnace Operators

Metallurgical Lab Operators

Break Down Operators

Responsibilities

Is responsible for the maintenance and upgrade of all PM6 applications.

Is responsible for loading recipes and entering parts.

Is responsible for loading and maintaining furnace information

Is responsible for historical process data (MMI Datalog Reports).

Is responsible for historical alarm data (MMI Alarm Reports).

Minimum Configuration Requirements

The following information is a list of minimum recommended hardware requirements for loading PM6 on a Windows 95 Workstation:

PM6 Workstation:

- Pentium PC - 100 MHz or better
- 32 megabytes of RAM or more
- At least 256 kilobytes of cache memory
- at least 2.0 gigabyte hard drive
- Color monitor with a .28 dot pitch or better
- CD-ROM
- At least 28.8 kbps modem
- Windows 95 or Windows NT Workstation operating system
- Parallel port
- 2mb video ram
- Mouse
- At least one serial port

PM6 Server:

- Pentium PC - 100 MHz or better
- 64 megabytes of RAM or more
- At least 512 kilobytes of cache memory
- 2.0 gigabyte or larger hard drive

Marathon Monitors Inc.

- Color monitor with a .28 dot pitch or better
- 28.8 KBPS modem or better
- CD ROM
- Windows NT Server operating system
- Parallel port
- 2mb video ram
- Mouse
- Tape back-up
- At least one serial port



See Also:



Internet Address



Technical Support

Installation

The Process Master 6.0 software may be installed onto two different platforms. Those platforms are:

- Windows 95
- Windows NT

Workstation Installation NT and 95

Use the following procedures to install the Process Master 6.0 software in a windows as environment.

Note



Before you install PM6 refer to the Minimum Configuration Requirements to be sure you meet the minimum hardware requirements.

Note



If you experience any problems with your PM6 installation in the Windows 95 environment please contact Marathon Monitor's Technical Support or the Web Site.

Steps:

1. Click the Windows 95 Start button.
2. Click the Settings option.
3. Click the Control Panel option.
4. Double click the Add/Remove Programs Icon.

Note



The Add/Remove Programs Properties window is displayed.



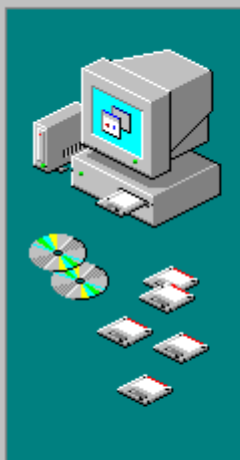
6. Click the Install... button.

Note The Install Program From Floppy Disk or CD-ROM window is displayed.



Marathon Monitors Inc.

Install Program From Floppy Disk or CD-ROM



Insert the product's first installation floppy disk or CD-ROM, and then click Next.

< Back

Next >

Cancel

7. Click the Next> button.

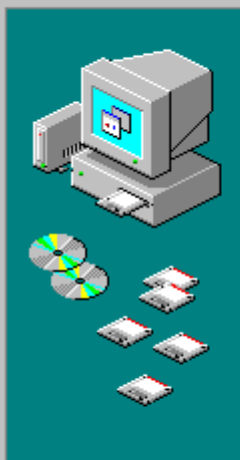
Note

The Run Installation Program window is displayed.



Marathon Monitors Inc.

Run Installation Program



Windows was unable to locate the installation program. Click Back to start the automatic search again or click Browse to manually search for the installation program.

Command line for installation program:

Browse...

< Back

Finish

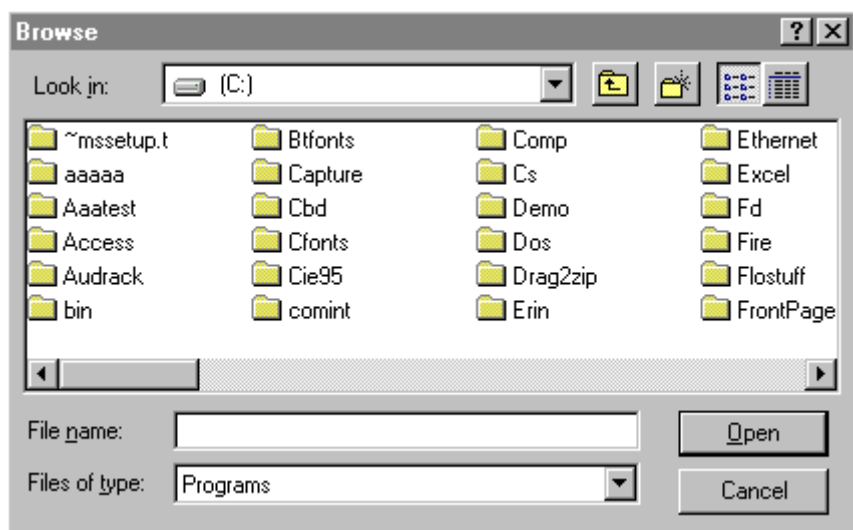
Cancel

8. Click the Browse button.

Note The Browse window is displayed.



Marathon Monitors Inc.



9. Click the Look in: drop down list arrow.

Note The list of available drives is displayed.



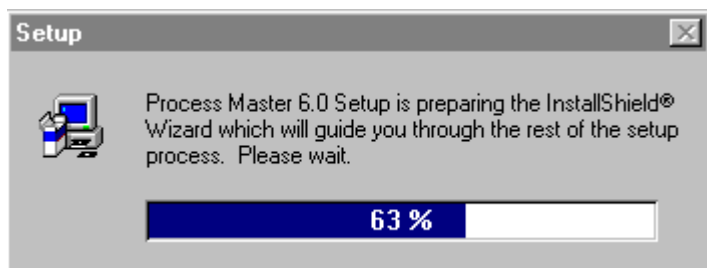
10. Click the CD ROM drive.

11. Double click the Setup.exe file.

12. The Run Installation Program window is displayed.

13. Click the Finish button.

14. The Setup window for PM6 will begin the install wizard.

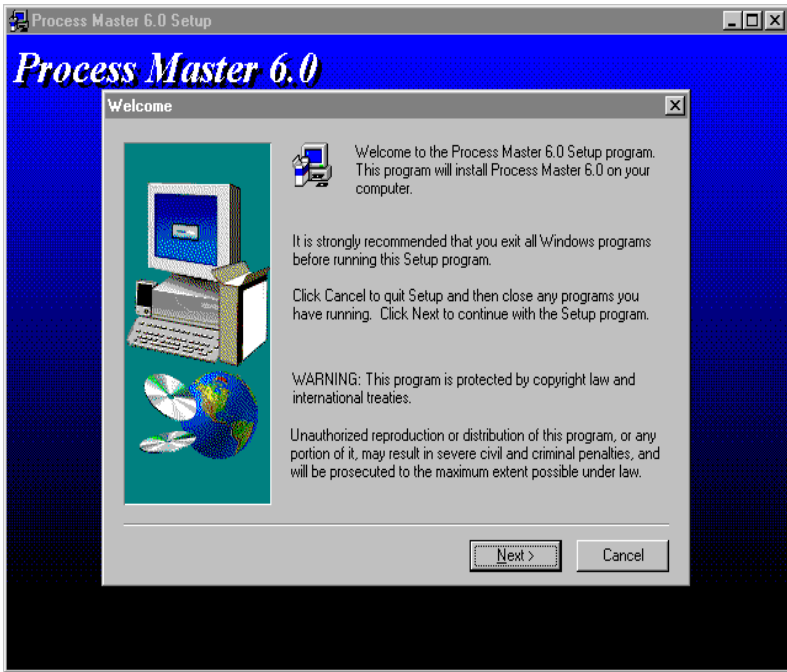


Note The list Setup window is displayed and then the Welcome

Marathon Monitors Inc.



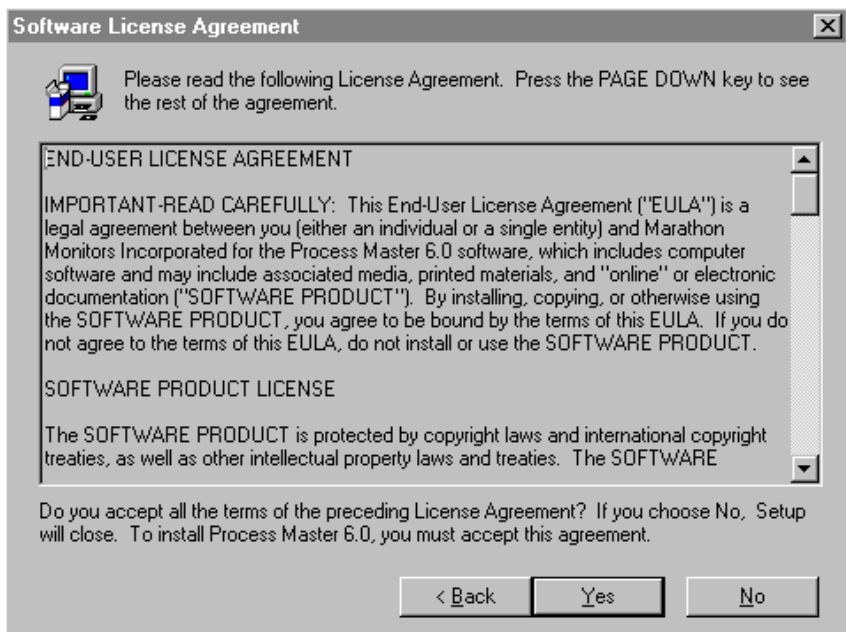
window is displayed on the Process Master 6.0 Setup screen.



- 16.** From the Welcome window click the Next> button.
Note The Software License Agreement window is displayed.



Marathon Monitors Inc.



17. Click the Yes button to continue the setup.
18. From the User Information window type your Name, the name of your Company, and click the Next> button.


Marathon Monitors Inc.

User Information ✕

Type your name below. You must also type the name of the company you work for.

Name:

Company:



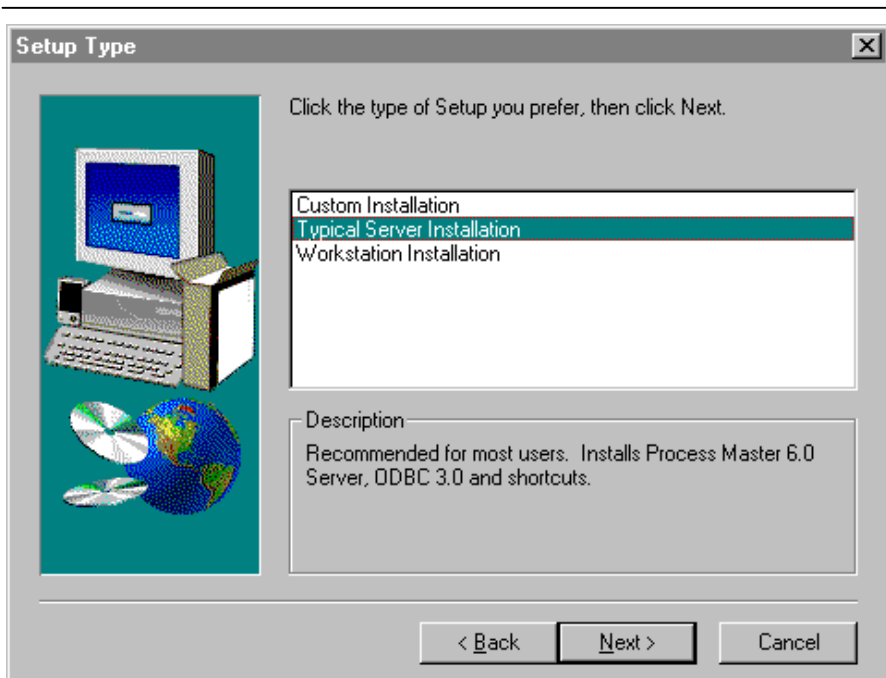
< Back Next > Cancel

19. From the Choose Destination Location select the default and click the Next button.

Note The Setup Type window is displayed.



Marathon Monitors Inc.



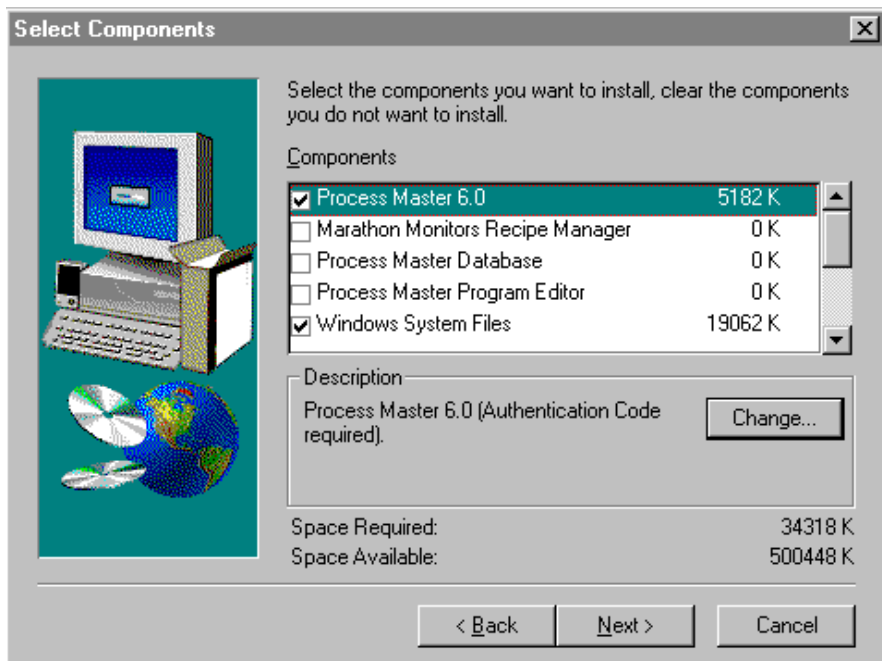
20. Select typical Server dir basic server package. Select Custom for optional application,

21. Click the Next> button.

Note The Select Components window is displayed.



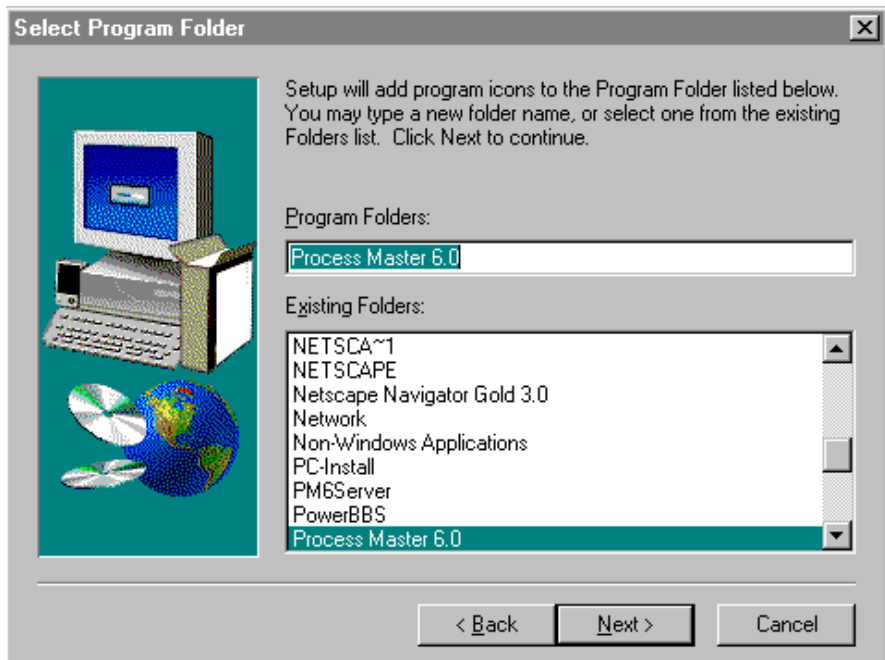
Marathon Monitors Inc.



- 22.** Click the desired PM6 options and click the Next> button.
Note The Select Program Folder window is displayed.



Marathon Monitors Inc.

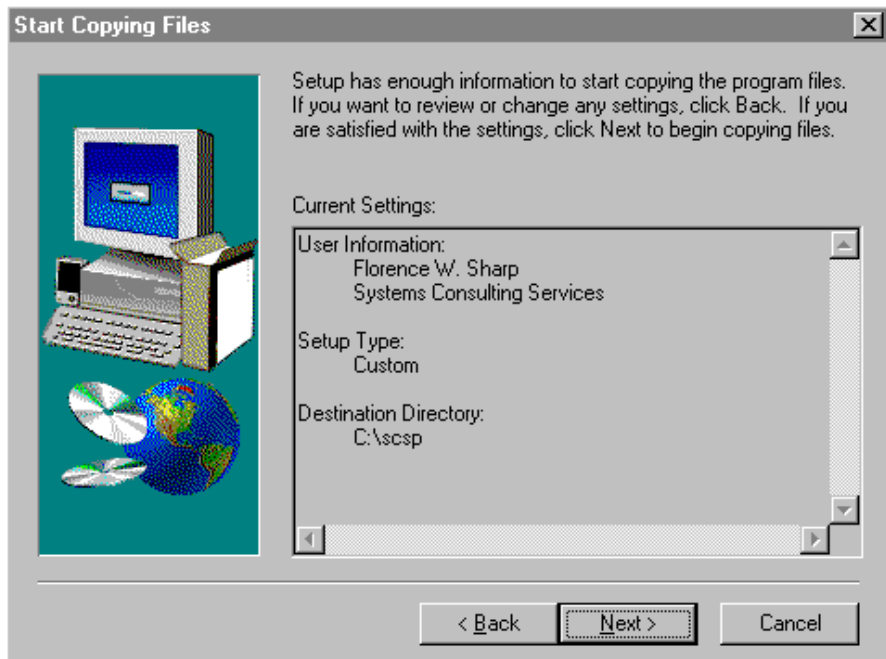


23. Click the Next> button.

Note The Start Copying Files window is displayed.



Marathon Monitors Inc.

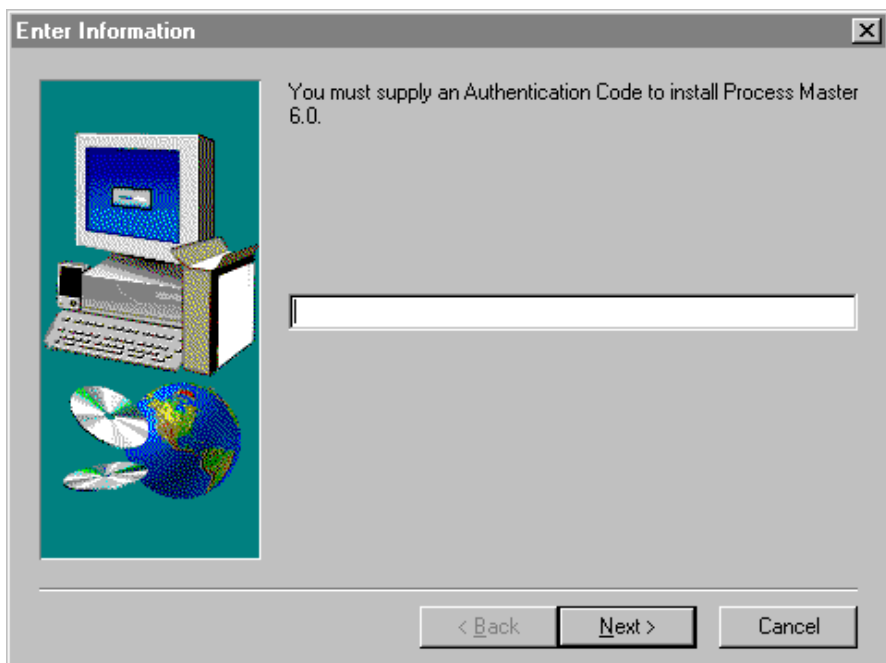


24. Click the Next> button.

Note The Enter Information window is displayed.



Marathon Monitors Inc.



- 25.** Type the Process Master 6.0 (or other PM6 application) Authentication code.

Note Authentication codes are listed in your CD-ROM case package. Each PM6 application that you install will require an authentication code.



- 26.** Click the Next> button.

Note The Setup window is displayed and the appropriate files are being installed.



Windows NT Server Installation

The following set of procedures are used to install the Process Master 6.0 application in the Windows NT environment.:

Note



Before you install PM6 refer to the Minimum Configuration Requirements to be sure you meet the minimum hardware requirements.

Note



If you experience any problems with your PM6 installation in the Windows NT environment please contact Marathon Monitor's Technical Support or the Web Site.

Steps:

1. Click the Start button.
2. Click the Settings option.
3. Click the Control Panel option.
4. Double click the Add/Remove Programs Icon.

Note

The Add/Remove Programs Properties window is displayed.





5. Click the Install... button.

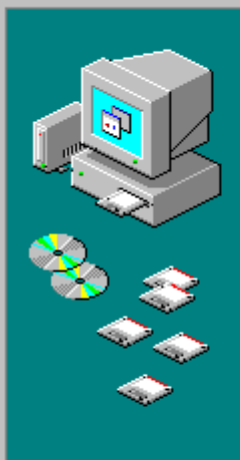
Note



The Install Program From Floppy Disk or CD-ROM window is displayed.

Marathon Monitors Inc.

Install Program From Floppy Disk or CD-ROM



Insert the product's first installation floppy disk or CD-ROM, and then click Next.

< Back

Next >

Cancel

6. Click the Next> button.

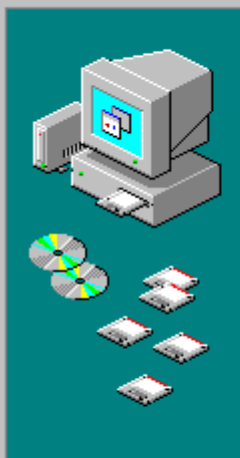
Note

The Run Installation Program window is displayed.



Marathon Monitors Inc.

Run Installation Program



Windows was unable to locate the installation program. Click Back to start the automatic search again or click Browse to manually search for the installation program.

Command line for installation program:

Browse...

< Back

Finish

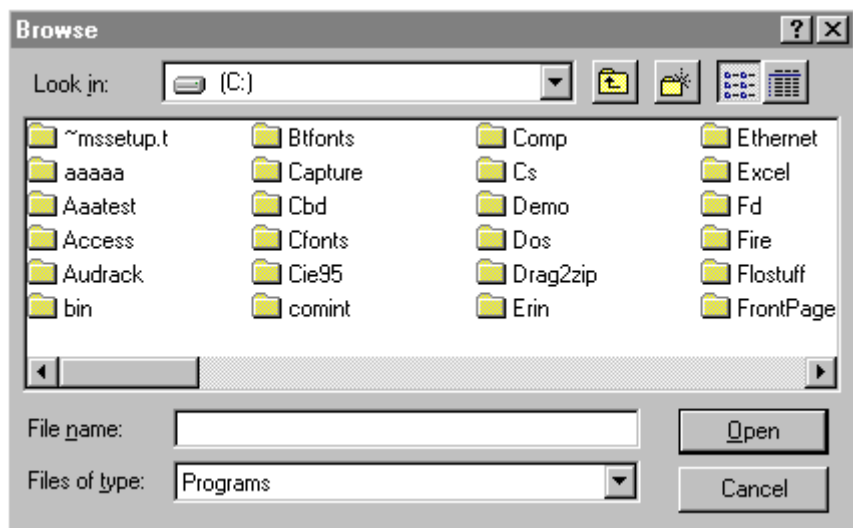
Cancel

7. Click the Browse button.

Note The Browse window is displayed.



Marathon Monitors Inc.

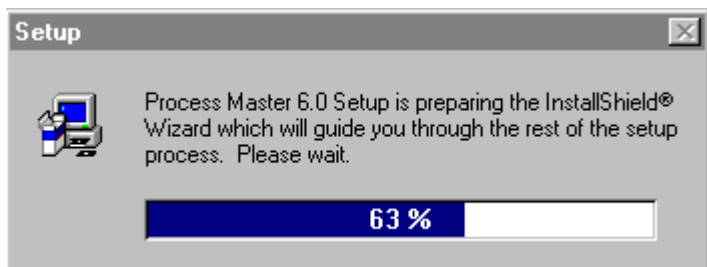


8. Click the Look in: drop down list arrow.

Note The list of available drives is displayed.



9. Click the CD ROM drive.
10. Double the latest Build of PM6 (Build-010).
11. Double click the Setup.exe file.
12. The Run Installation Program window is displayed with the drive, build number, and setup.exe file (e.g., E:\Build-010\Setup.exe).
13. Click the Finish button.
14. The Setup window for PM6 will begin the install wizard.



Marathon Monitors Inc.

- Note** The list Setup window is displayed and then the Welcome window is displayed on the Process Master 6.0 Setup screen.



- 15.** From the Welcome window click the Next> button.
Note The Software License Agreement window is displayed.



Marathon Monitors Inc.



16. Click the Yes button to continue the setup.
17. From the User Information window type your Name, the name of your Company, and click the Next> button.

Marathon Monitors Inc.


User Information [X]

Type your name below. You must also type the name of the company you work for.

Name:

Company:

< Back Next > Cancel

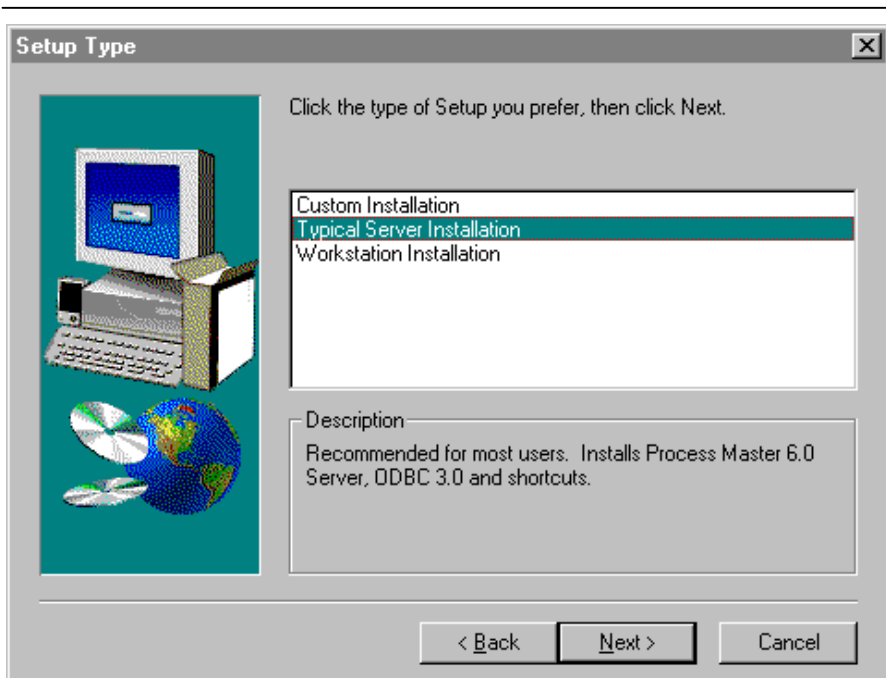


18. From the Choose Destination Location select the default and click the Next button.

Note The Setup Type window is displayed.



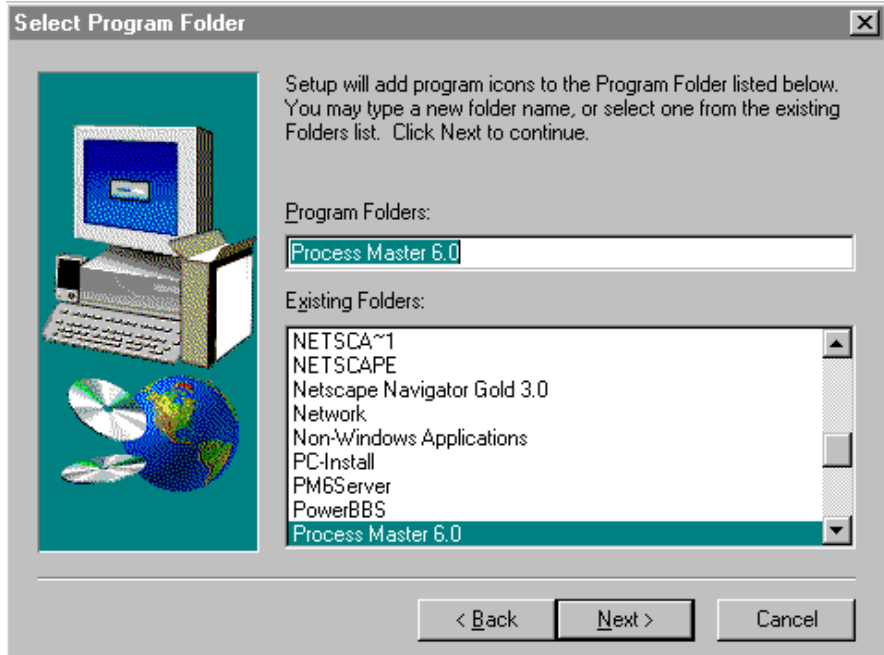
Marathon Monitors Inc.



19. Click the Typical Server or custom Installation option.
 20. Click the Next> button.
- Note** The Select Components window is displayed.



Marathon Monitors Inc.

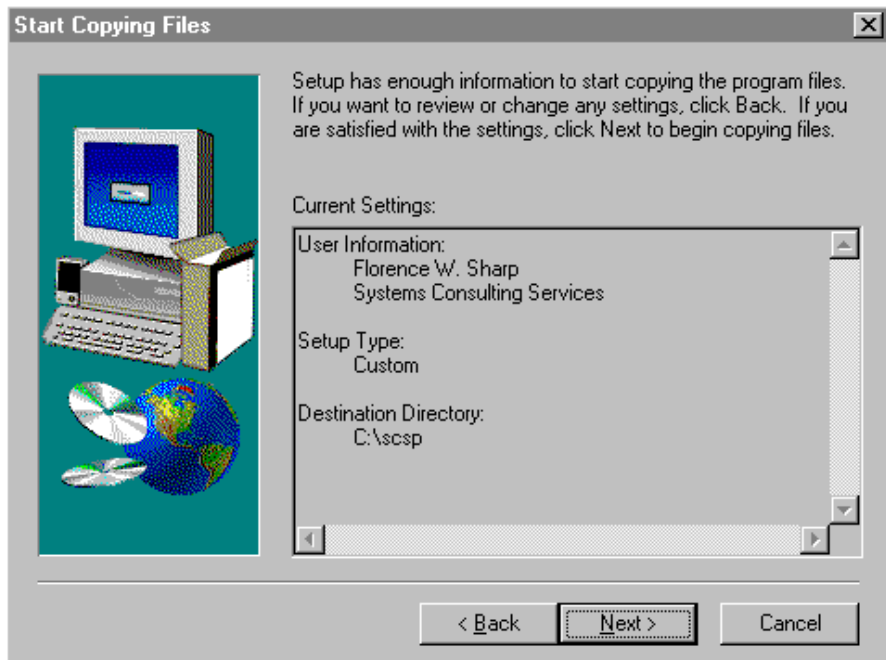


21. Click the Next> button.

Note The Start Copying Files window is displayed.



Marathon Monitors Inc.

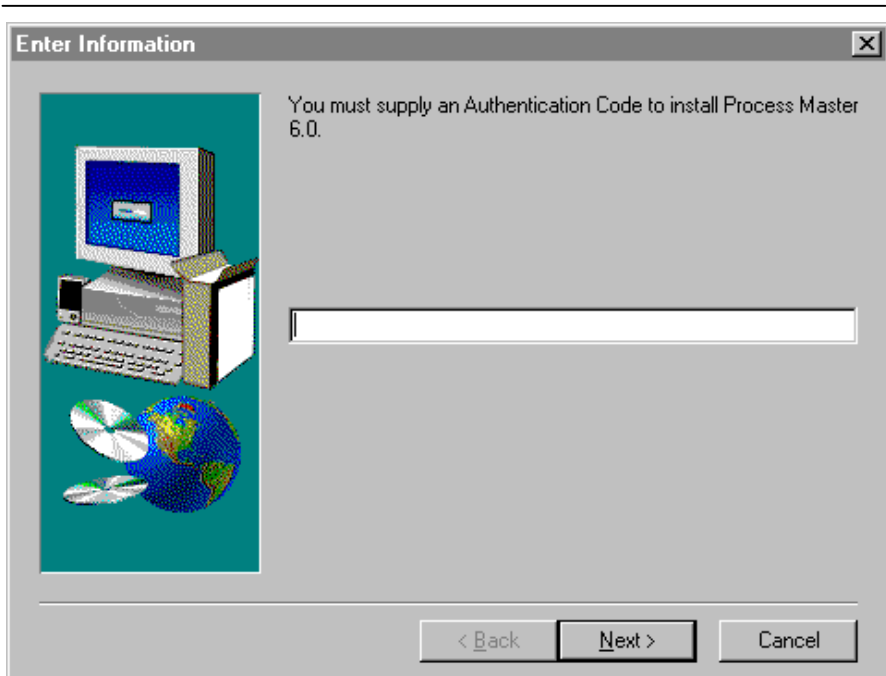


22. Click the Next> button.

Note The Enter Information window is displayed.



Marathon Monitors Inc.



- 23.** Type the Process Master 6.0 (or other PM6 application) Authentication code.

Note The Setup screen is displayed.



Note The two windows are displayed after the ODBC window. One is for system configuration and the other is the copying of the autoexec.bat file.



Installing PM6 as a Service on Windows NT Server

The following information is a list of steps used to install PM6 Comms as a Service on a Windows NT Server:

Note



The following steps should only be used by the Windows NT System Administrator. If you are not sure of how the following steps affect your system please click the Technical Assistance help topic.

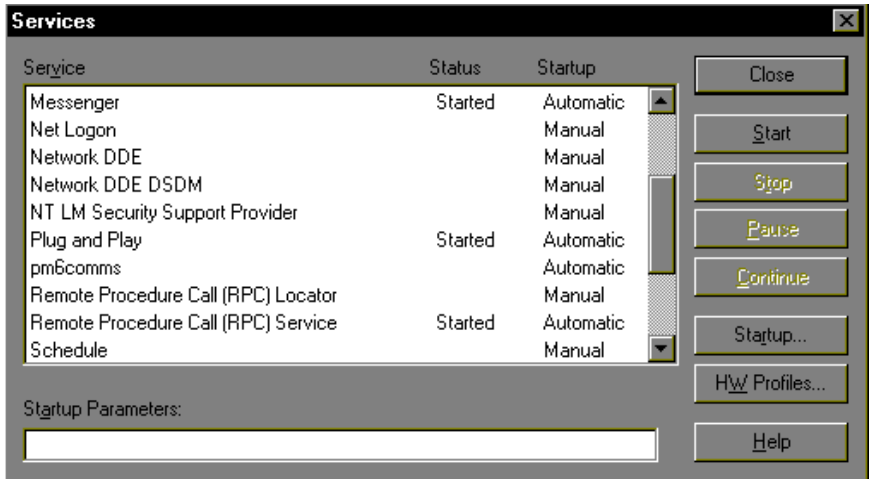


Services

Note



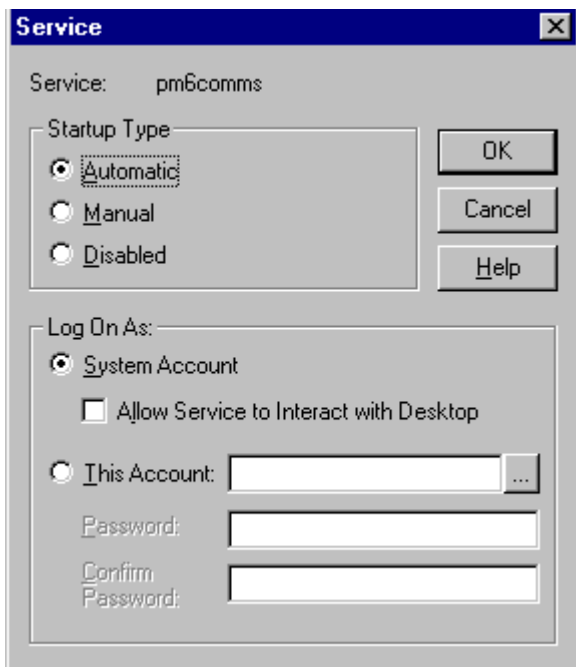
The Services Window is displayed.



Marathon Monitors Inc.

9. Double click the PM6Comms item.
The Services Window is displayed.

Note



10. Click the "Allow Service to Interact with Desktop" check box and click the OK button..

Note
The Services Window is closed and the next Services window is displayed.



11. Click the Close button.

Note
The Control Panels window is displayed.



Technical Support

For technical support for Process Master 6.0 call or FAX your questions to the following phone numbers:

Phone Number:



1-800-322-4444

FAX Number:



1-513-772-7853

Note



For the latest information regarding new releases for Process Master 6.0 and the full range of products and services that Marathon Monitors provides see our web site below:

Marathon Monitors' Internet Address

Marathon Monitor's Internet Address or Web site is accessible through this online help. Click the web address listed below and your web browser will be displayed, launching Marathon Monitor's web site.

Web Address:



<http://www.marathonmonitors.com>

**Technical
Support Email
Address:**



dschmidt@marathonmonitors.com

**Sales Support
Email Address:**



dschmidt@marathonmonitors.com

Note



The technical support email address is a customer service address for you to send questions and receive technical support. All sales related questions should be forwarded to the sales support email address. Both the Technical and Sales Support will respond within a 24 hour time period.

Uninstall Procedures

Warning



Warning

The following step will delete or remove all of the program and system files of the Process Master 6.0 software from your workstation. If you have any questions regarding this option call Marathon Monitors' Technical Support immediately.

The following steps are used to uninstall the Process Master 6.0 software. Do not use this option unless you are a Systems Administrator or PM6 Technician.

Use the following steps to uninstall the PM6 software:

Steps:

1. Click the Windows 95/NT Start button.
2. Click the Programs option.
3. Click the PM6Server option.
4. Click the UnInstall icon.

Note

The Confirm File Deletion window is displayed.



Warning



Warning

The removal of all of the PM6 application files and system files begins immediately and will process in less than a minute from a workstation.

Note

Clicking the No option will end the UnInstall option. To continue the uninstall click the Yes option.



3. Click the Yes button to delete the PM6 applications.

Note

The Uninstall Shield window flashes across the screen and the Remove Shared files window is displayed.



4. Click the Yes To All button o quickly remove all other PM6 applications and the associated files.

Note

The Remove Programs From Your Computer window is activated and the Remove Shared Files? Window is no

Marathon Monitors Inc.



longer displayed. The process of removing PM6 and all of its associated files is automatically accomplished.

5. Click the OK button to complete the unInstall.

Notes: